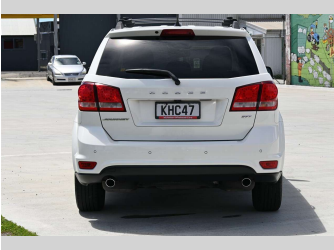
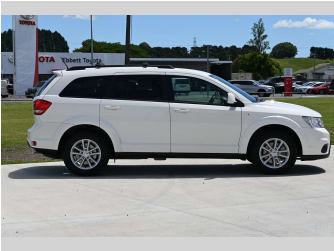
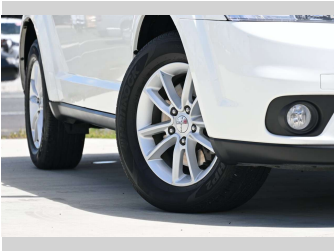


2016 Dodge Journey SXT 3.6P/6AT/SW/5DR/



Purchase Price

\$13,995

Includes GST, Registration & Licensing

Indicative repayments

\$85.49 per week*

Based on a 48 month term & no deposit.
Total repayments (208) = \$17,782.43

Gain peace of mind with Mechanical Breakdown Insurance. Ask us how.

Top features

None Listed

Body Style

5 door, Station Wagon

Odometer

92,621 km

Engine

3605 cc, Internal Combustion

Fuel Type

Petrol

Transmission

Auto, Front Wheel

Wheels

-

VIN

3C4PDCJG6GT126151

Interior

-

Safety

Based on 2025 UCSR rating for 08-16 models

Reg No.

KHC47

Ext Colour

White

History

NZ New, 3 owners

Seats

7 seats

CO2 Emissions

★☆☆☆☆
279 grams/km

Energy Economy

★☆☆☆☆
Annual fuel cost of \$4,550
11.6L per 100km

Cost per year is an estimate based on petrol price of \$2.80 per litre and an average distance of 14000 km. Emissions and Energy Economy figures standardised to 3P WLTP.

Stock ID: 2668